

Overview of Israel



- ☞ Israel is about the same size as the state of New Jersey
- ☞ The total area of the Israel is approximately 8,020 sq. miles.
- ☞ 260 miles in length and about 71 miles across at the widest point.
 - ☞ "From Dan to Beersheba" is approximately 150 miles
- ☞ Today country is bordered by Lebanon to the north, Syria to the northeast, Jordan to the east, Egypt to the southwest and the Mediterranean Sea to the west.
- ☞ Highest point is Mount Meron (3,964 ft **above** sea level)
 - ☞ What about Mt. Hermon? (Peak is in Syria/ 9,232 ft **above** sea level)
 - ☞ Several higher points in the Golan Heights (Annexed by Israel in 1981)
- ☞ Lowest point is the Dead Sea (1,412 ft **below** sea level)



Modern Map of Israel and surrounding countries



Wall marking the West Bank / Palestinian Authority Border (June 2022)



Sign in the West Bank / Note writing in Hebrew, Arabic, and English (June 2022)



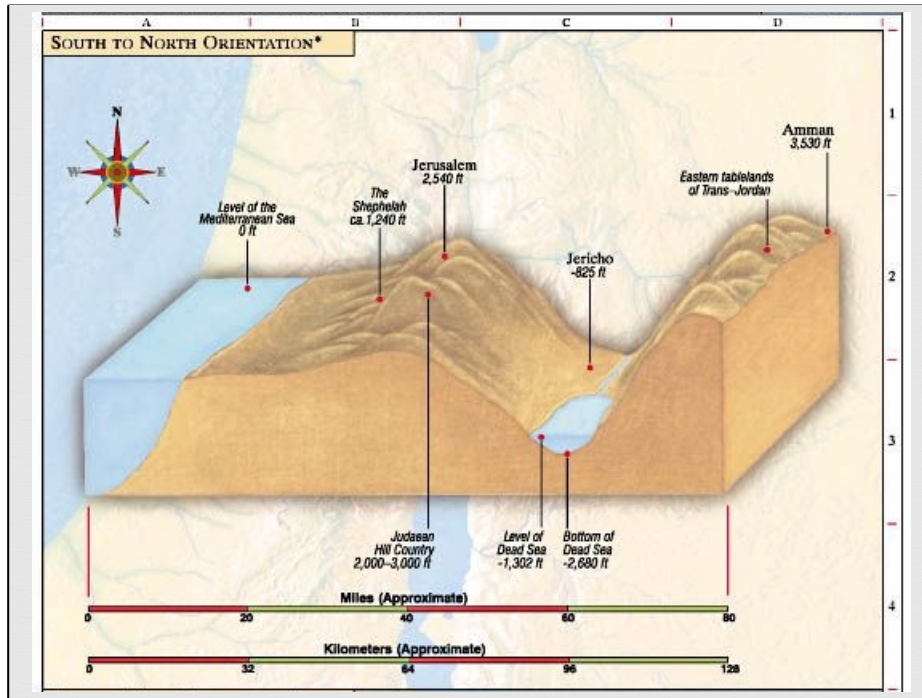
Mt. Hermon (June 2022) with a little snow remaining on top / Shot taken from Golan Heights



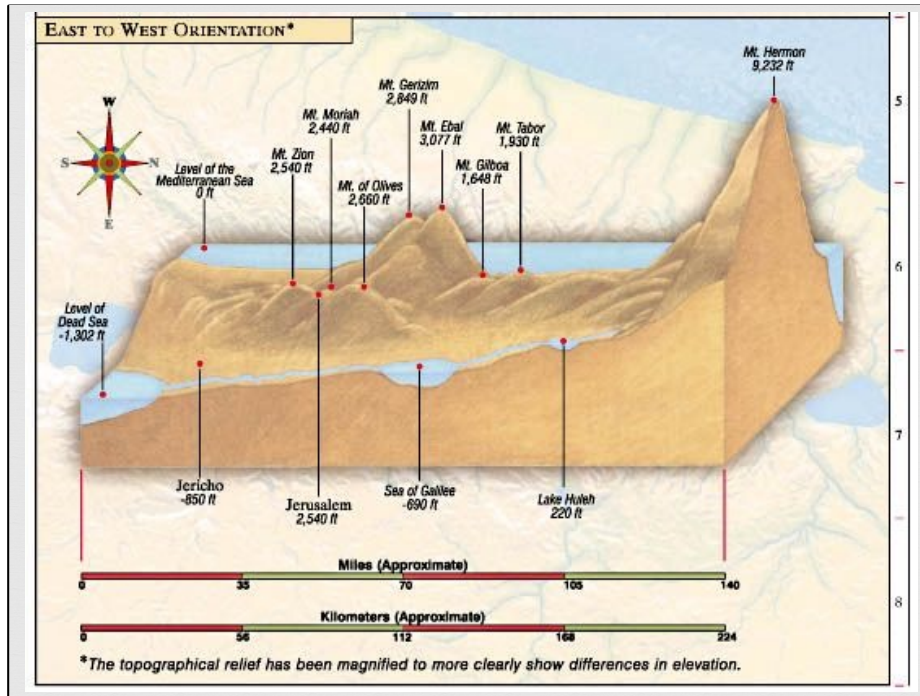
Mt. Hermon (June 2022) with a little snow remaining on top



Dead Sea (June 2022) / Lowest Point in Israel and on Earth



Topography of Israel from Mediterranean (East) to the Jordan River Valley (East)



Topography of Israel from Dead Sea (South) to Mount Hermon (North)

Climate in Israel



- ☞ Jerusalem is at the same latitude as El Paso, TX
- ☞ Israel has a wide variety of climatic conditions, caused mainly by the country's diverse topography.
- ☞ Israel has two distinct seasons
 - ☞ A cool, rainy winter (October-April)
 - ☞ A dry, hot summer (May-September)
- ☞ Precipitation is light in the south, amounting to about 1 inch per year south of the Dead Sea, while in the north it is relatively heavy, up to 44 inches a year in the Upper Galilee region.

Geography of Israel

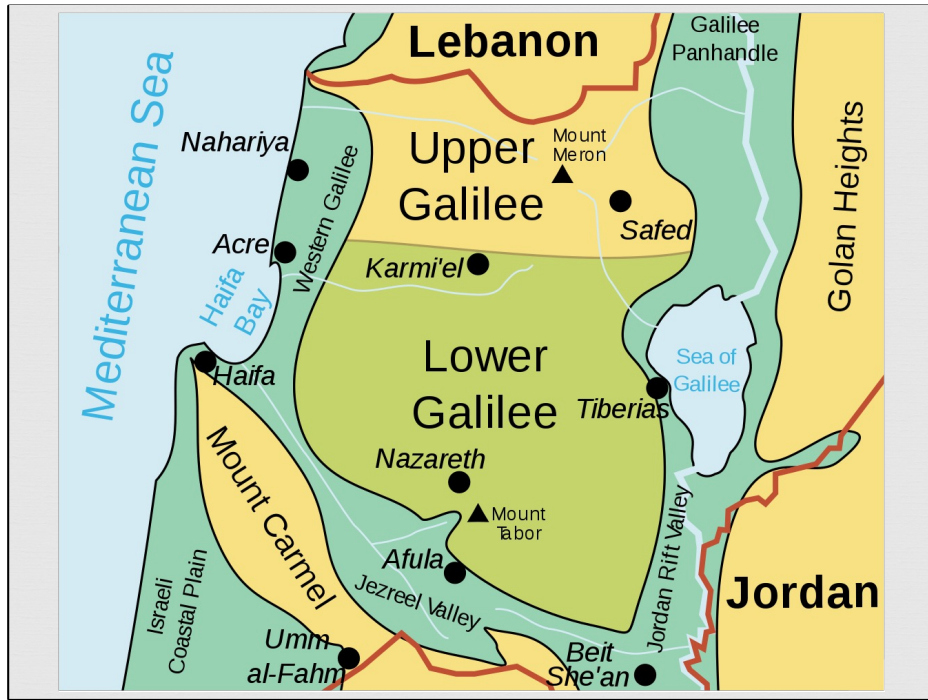


The geography of Israel is very diverse, with desert conditions in the south, and lush hills with snow-capped mountains in the north.

North - Galilee / Jezreel Valley



- ☞ Galilee - Located in northern Israel and southern Lebanon. Divided into Upper Galilee, Lower Galilee, and the Galilean Peninsula.
- ☞ Jezreel Valley - a large fertile plain and inland valley in the Northern District of Israel.
- ☞ Prominent locations include:
 - ☞ Tel Megiddo - Jezreel Valley
 - ☞ Mount Tabor - Jezreel Valley / Lower Galilee
 - ☞ Nazareth - Lower Galilee
 - ☞ Sea of Galilee - Lower Galilee
 - ☞ Capernaum - Lower Galilee
 - ☞ Tel Dan - Upper Galilee / Galilean Peninsula
 - ☞ Tel Hazor - Upper Galilee





View of Jezreel Valley from Megiddo (December 2019)



View of Jezreel Valley from Megiddo (June 2022)



View of Jezreel Valley from Megiddo. Mt. Tabor is in the distance. (June 2022)



View of Jezreel Valley from Mt. Tabor with Nazareth in the distance. (December 2019)



View of Jezreel Valley from Mt. Tabor (December 2019)



View of Mt. Gilboa from Mt. Tabor (December 2019)



Southern Galilee / Solar Panels (May 2022) > Green squares are irrigated from Sea of Galilee



View of Southern Galilee from Zippori (December 2019)



View of Southern Galilee from Zippori (May 2022)



Sunrise over the sea of Galilee (May 2022)



Cliffs of Arbel on northern end of the Sea of Galilee (May 2022)



Eastern side of the Sea of Galilee (January 2020)



Northern Galilee from Tel Hazor (December 2019) / Near border of Lebanon



Galilean Peninsula / Crusader Fortress (June 2022)



Galilean Peninsula / Terrace Farming > Technique employed for thousands of years
(June 2022)

Jordan River Valley



- ✧ A 65-mile-long rift-valley or depression where the lower course of the Jordan River divides Israel (West Bank) from Jordan.
- ✧ This lower course begins where the Jordan River exits the Sea of Galilee and extends all the way to the Dead Sea.
- ✧ The geography changes dramatically along the course of the river
- ✧ John the Baptist baptized in the Jordan River / Jordan River Valley near the Judean Wilderness (Matt 3:1, Mark 1:4; Luke 3:2-3)





Norther part of the Jordan River Valley from Tel Bet Shean – Looking East toward Jordan (January 2020)



Northern Part of Jordan River Valley looking East toward Jordan and the Gilead Mountains (June 2022)



Northern Part of Jordan River Valley looking East toward Jordan and the Gilead Mountains (June 2022)



Northern Part of Jordan River Valley looking East toward Jordan and the Gilead Mountains (June 2022) / Note Jordan river to the left of this slide



Central Part of Jordan River Valley looking East toward Jordan and the Gilead Mountains (June 2022)



Date Palms in the Jordan River Valley (June 2022)

Judean Mountains



- ❧ The Judean Mountains is a mountain range in Israel and the West Bank where Jerusalem and several other biblical cities are located.
- ❧ The mountains reach a height of 1,026 meters (3,366 ft)

- ❧ Prominent locations in Judean Mountains include:
 - ❧ Jerusalem
 - ❧ Bethlehem





View towards Jerusalem from Herodium (June 2022)



View of surrounding hills from Jerusalem (June 2022)



View of surrounding hills from Jerusalem (June 2022)



View of Judean Mountains from Jordan River Valley (June 2022)

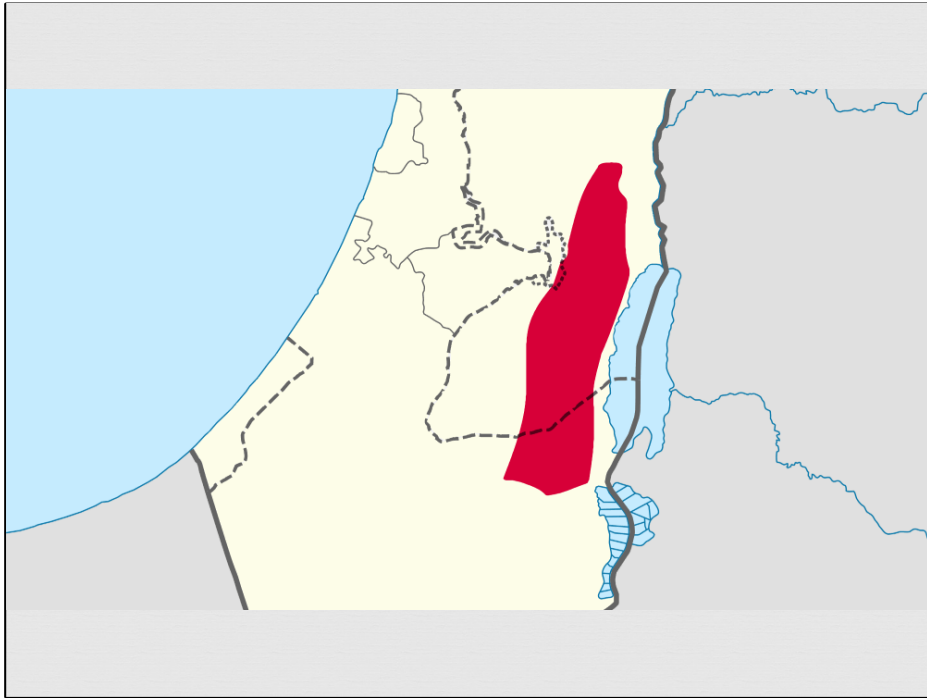
Wilderness of Judea



- ✧ Also known as the **Judean Desert**, this area is a wilderness landscape spanning from the Judean Hills at 1,000m above sea level to the west all the way down to the Dead Sea at 400m below sea level in the east.

- ✧ Prominent locations in the Wilderness of Judea include:
 - ✧ Jericho (Mount of Temptation)
 - ✧ Qumran (Dead Sea Scrolls)
 - ✧ Ein Gedi
 - ✧ Masada

- ✧ Area where John the Baptist preached (Matt 3:1, Mark 1:4; Luke 3:2-3) and where Jesus was tempted (Matt 4:1; Mark 1:12-13; Luke 4:1)





View at Qumran (January 2020)



View at Qumran (June 2022)



View at En Geidi (January 2020)



View at En Geidi (January 2020)



View from top of Masada (January 2020)



View from top of Masada (June 2022)

Negev Desert



- ✧ The Negev Desert comprises approximately 12,000 square kilometers (4,633 sq mi), more than half of Israel's total land area. Geographically it is an extension of the Sinai Desert, forming a rough triangle with its base in the north near Beersheba, the Dead Sea, and the southern Judean Mountains, and it has its apex in the southern tip of the country at Eilat. Topographically, it parallels the other regions of the country, with lowlands in the west, hills in the central portion, and the Arava valley as its eastern border
- ✧ The most prominent Biblical location in the Negev is Beersheba





Northern end of the Negev toward Be'er Sheva (January 2020)



Northern end of the Negev toward Be'er Sheva (June 2022)

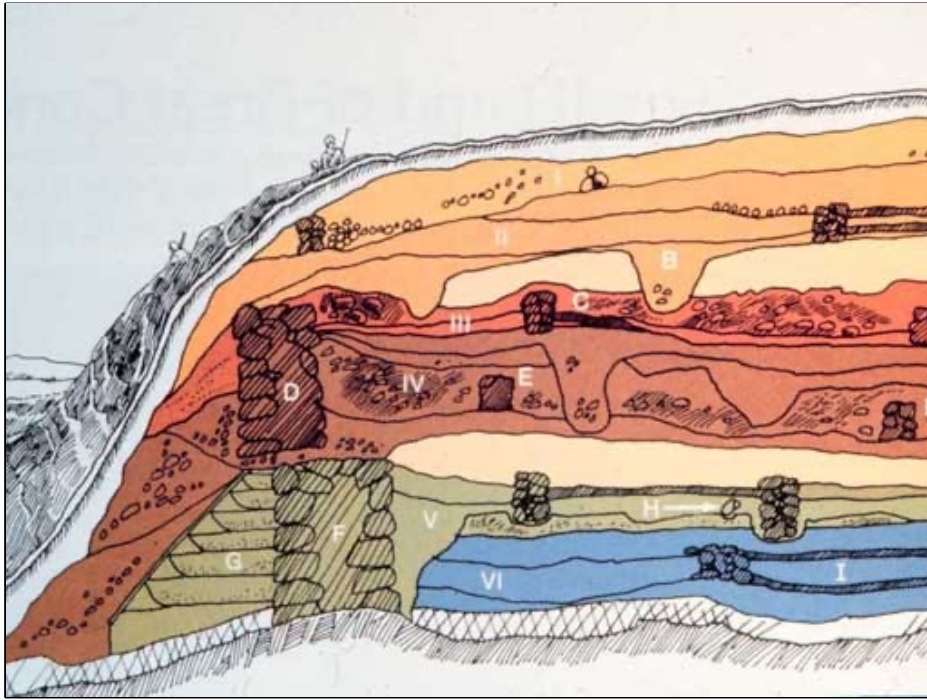


Northern end of the Negev from Be'er Sheva (January 2020)

Tel (Tell) Archaeological Mound



A "Tel" is an artificial hill created by cities built one on top of the other. When a city was destroyed by earthquake or war, and a new city was built on top, this created layers or **strata**. Different strata can be from different eras or time-periods.



Representative diagram of a Tel (Tell) showing levels of strata from years of destruction and rebuilding.



Tel at Bet She'an (January 2020)



Tel at Bet She'an (June 2022)



Tel Megiddo (June 2022)



View from the top of Tel Megiddo showing excavation through the various strata. Note the round Canaanite altar to the right. (June 2022)



View from the top of Tel Megiddo showing excavation through the various strata.
(June 2022)